

Scrutiny Review Panel 3: Air Quality

Ealing Town Hall 27 September 2018

Slides to accompany officer's reports:

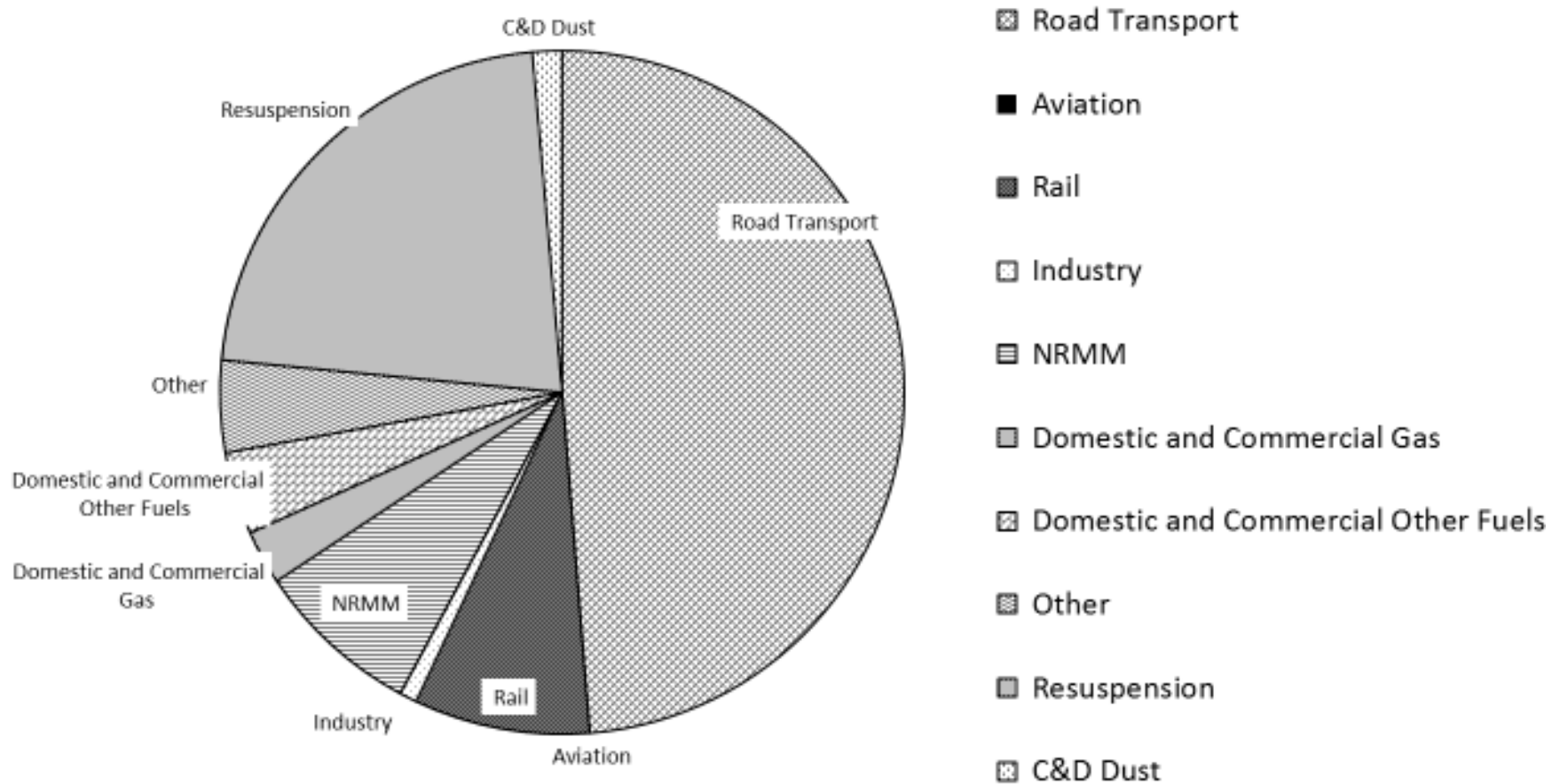
Air Pollution from Construction Projects

Pollution issues relating to the F.M. Conway Ltd asphalt plant in Hayes and the regeneration work at the Southall Waterside site

REGENERATION & HOUSING

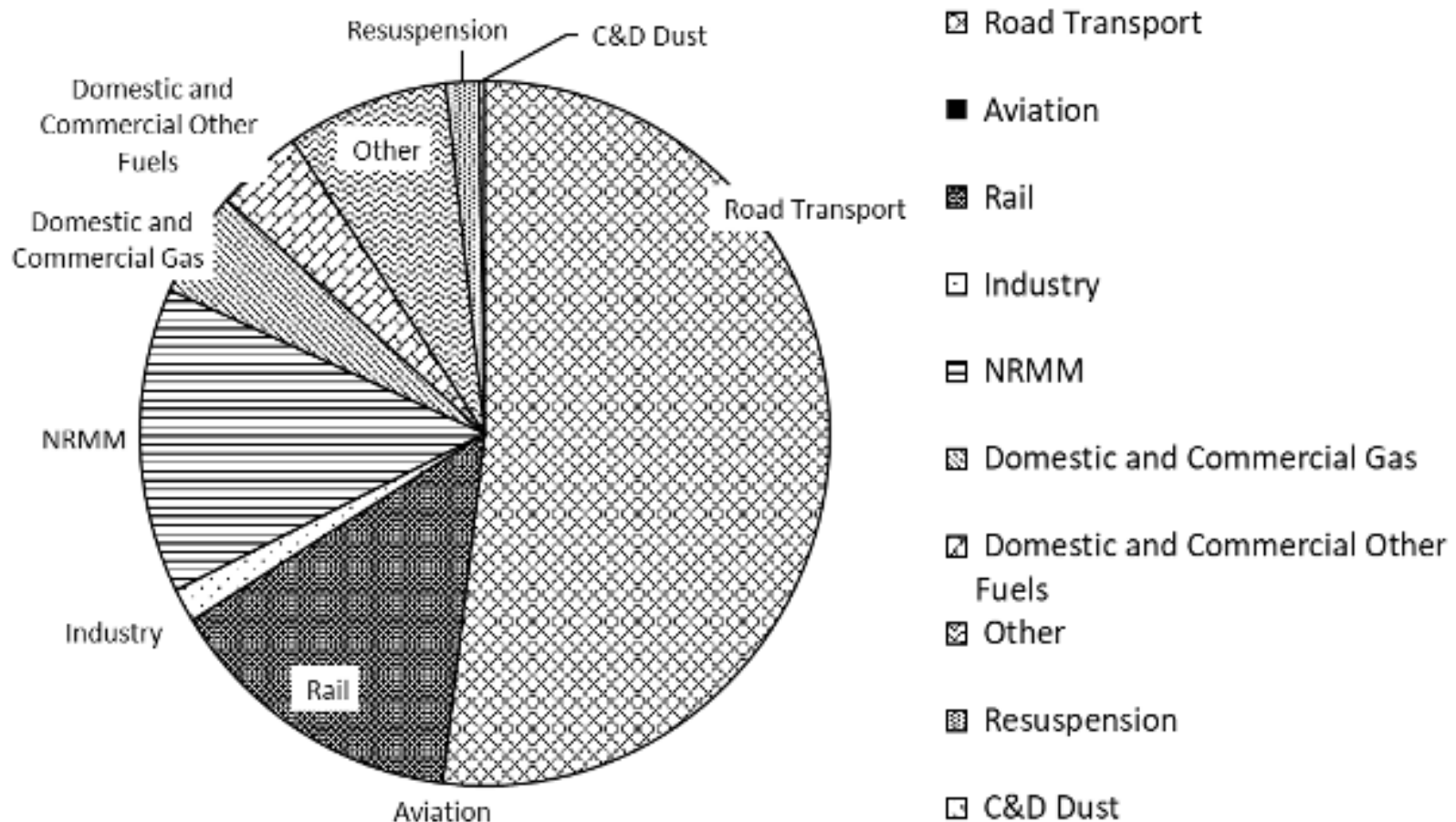
Sources of emissions of particulate matter (PM₁₀) in the London Borough of Ealing

PM₁₀ Emissions Sources in Ealing



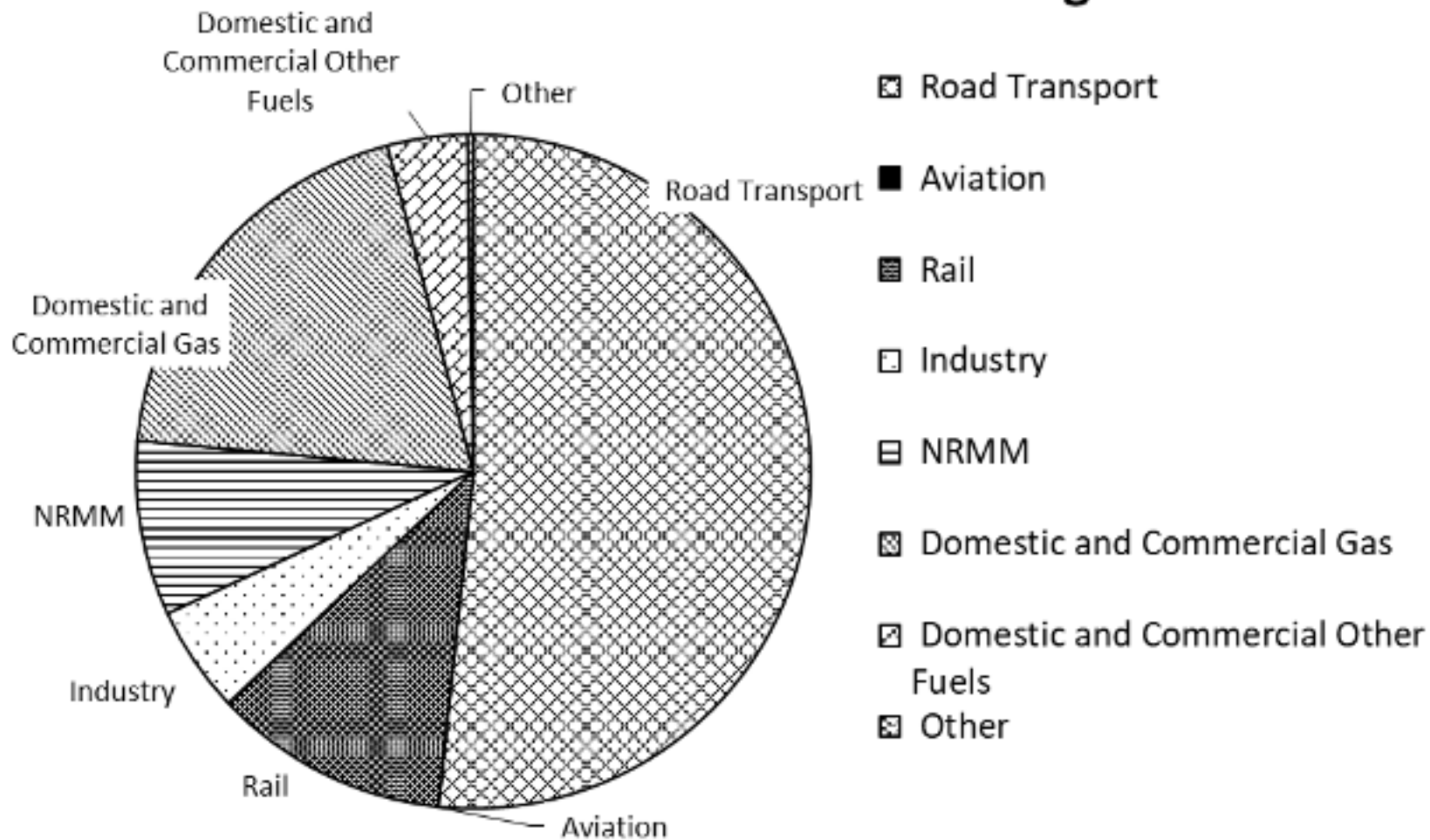
Sources of emissions of fine particulate matter (PM_{2.5}) in the London Borough of Ealing

PM_{2.5} Emissions Sources in Ealing



Nitrogen oxides (NO_x) emissions sources in the London Borough of Ealing

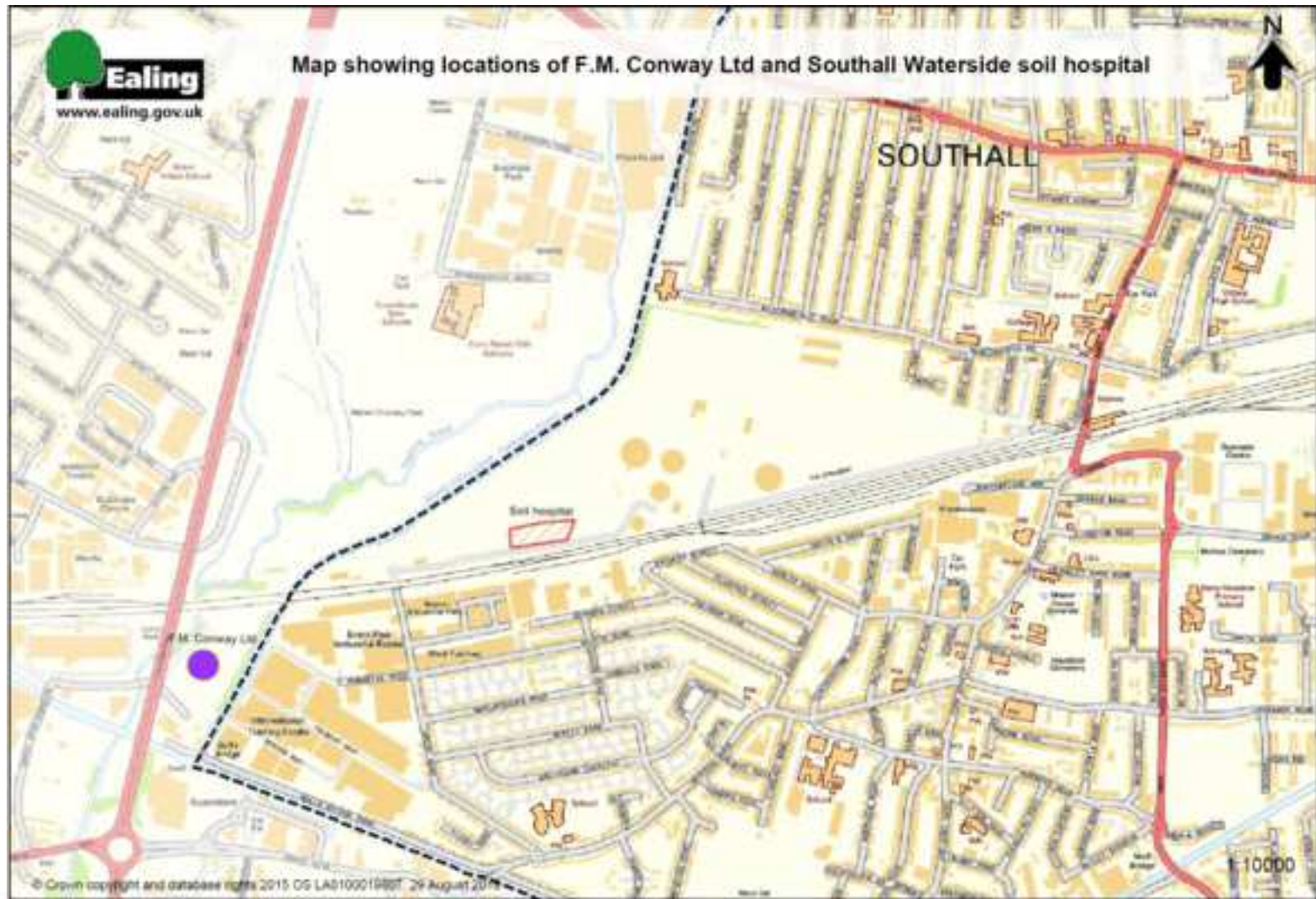
NO_x Emissions Sources in Ealing



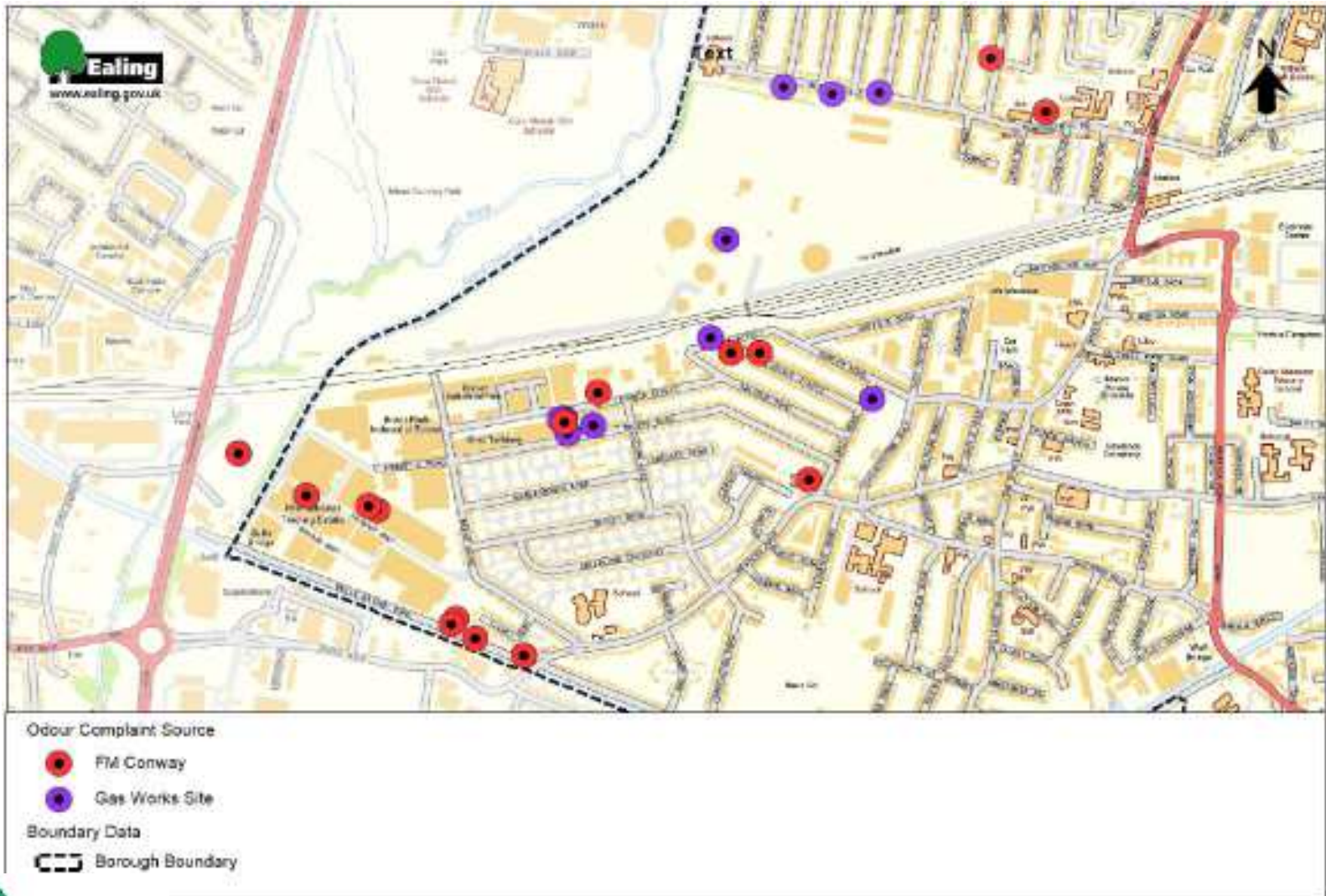
Focus Areas LAEI 2013 in Ealing



Location map of F.M. Conway Ltd and Southall Waterside soil hospital sites



Geographical distribution of odour complaints received

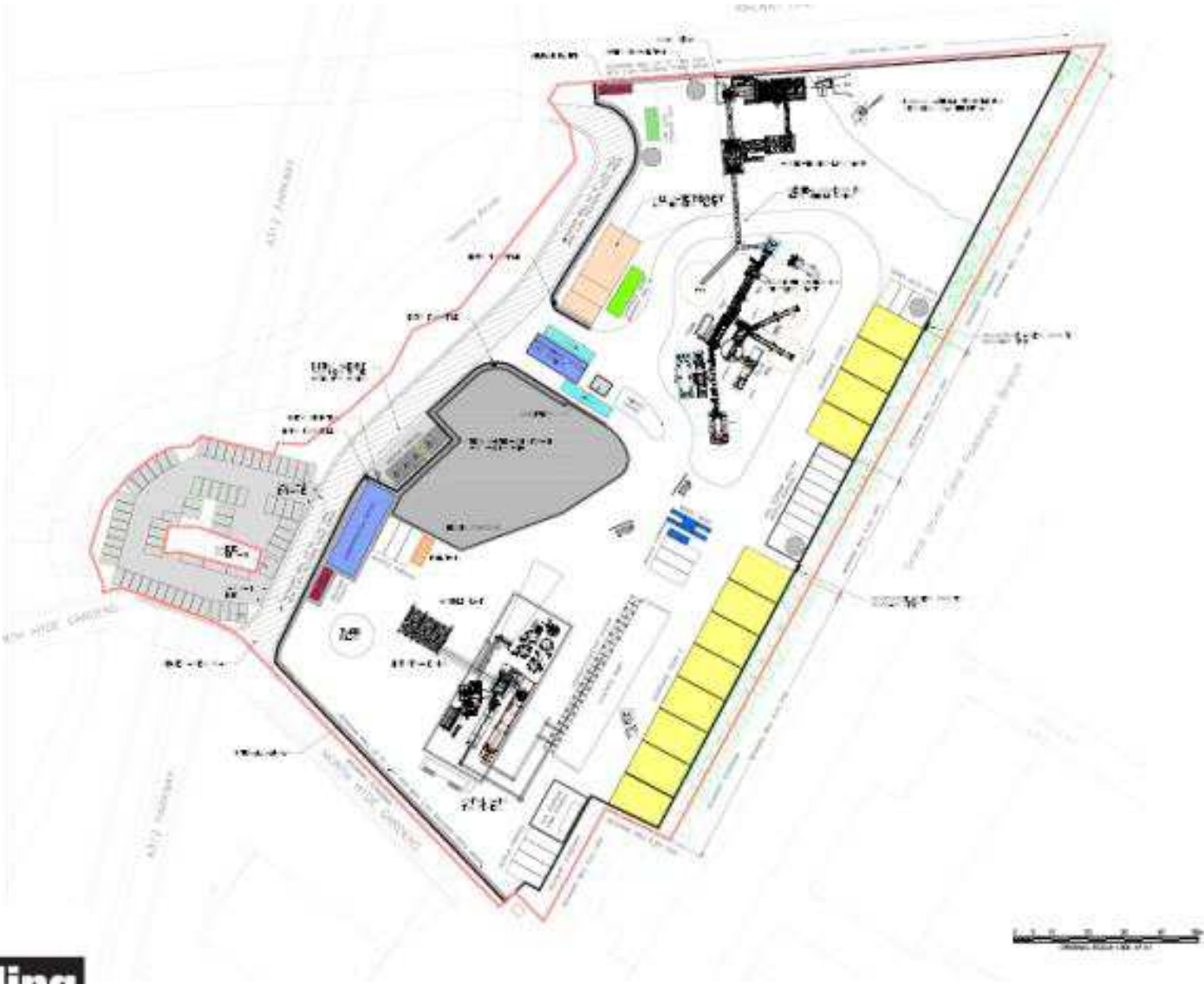


Location map of the F.M. Conway plant in the London Borough of Hillingdon (from permit)

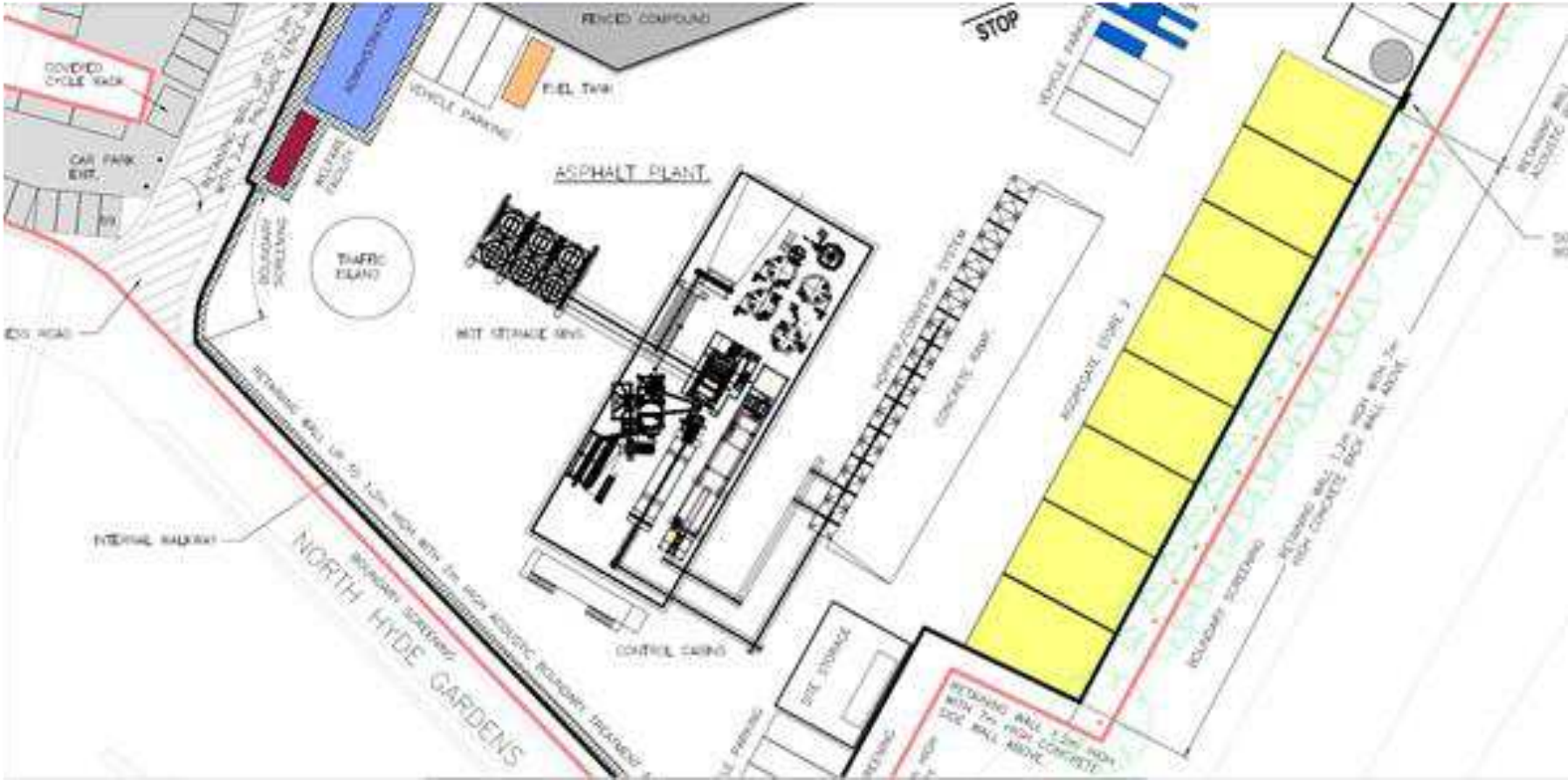
FM Conway (Heathrow Depot), North Hyde Gardens, Hayes



Layout of F.M. Conway site (from permit)



Roadstone coating plant at the F.M. Conway site (from permit)



Aerial photograph of the location of the Southall Waterside soil treatment hospital



Imagery ©2018 Bluesky, DigitalGlobe, Getmapping plc, Infoterra & Bluesky, The GeoInformation Group. Map data ©2018 Google

For further information please contact

John Freeman
Planning Enforcement and Environment Team
Regulatory Services
London Borough of Ealing
020 8825 7226
pollution-technical@ealing.gov.uk